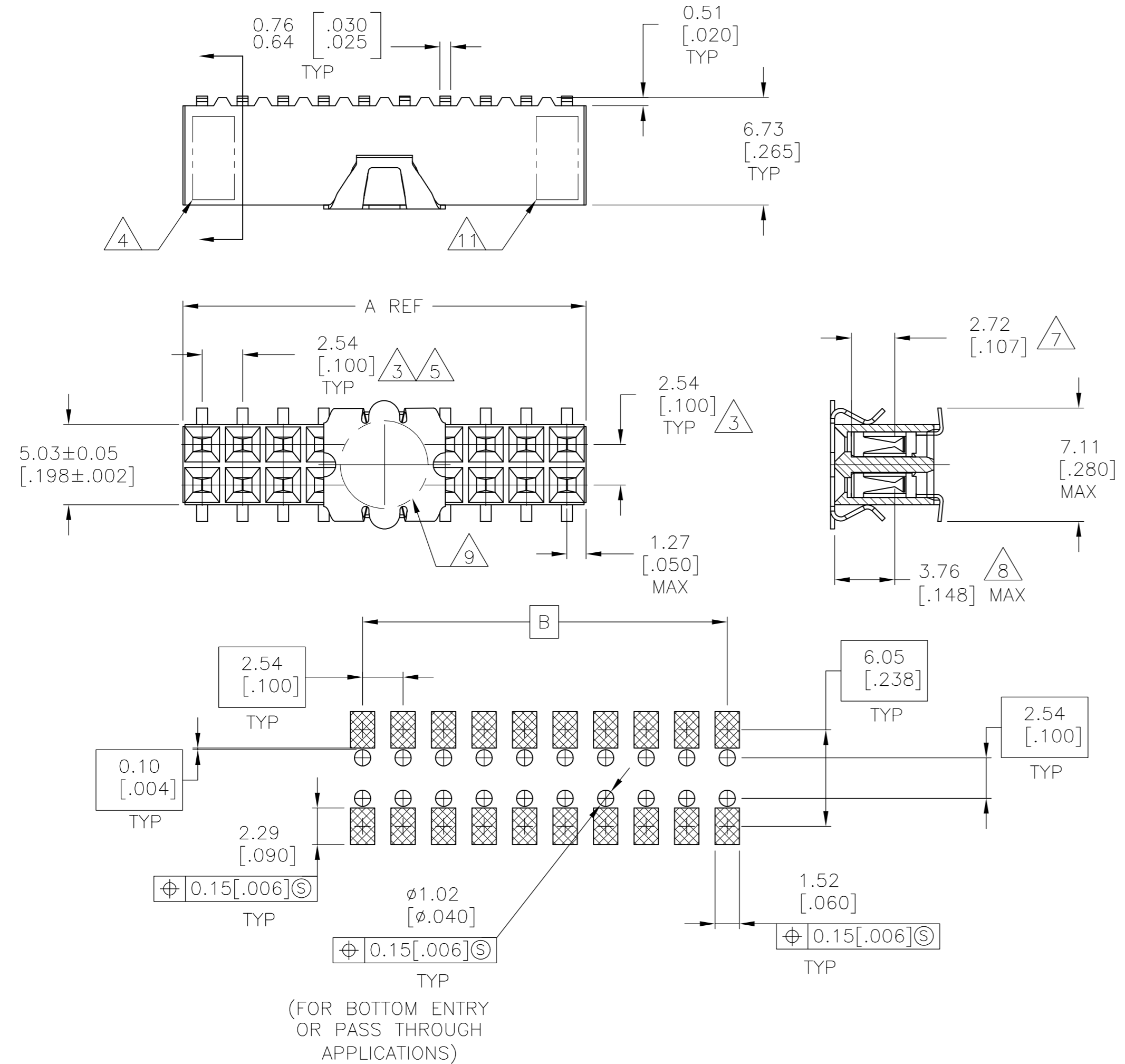


THIS DRAWING IS UNPUBLISHED. RELEASED FOR PUBLICATION  
 © COPYRIGHT BY TYCO ELECTRONICS CORPORATION. ALL RIGHTS RESERVED.

LOC		DIST		REVISIONS				
P	LTR	DESCRIPTION			DATE	DWN	APVD	
	J3	ECO-07-003804			11JUL2007	RB	JO	

FOR PART NUMBERS 5-147105-1 THRU 9-147105-0  
 SEE SHEET 2



RECOMMENDED PC BOARD LAYOUT  
 0.20[.008] THICK STENCIL

FINISH	EIA TAPE WIDTH	B	A	NO. OF POSN.	PART NUMBER
2	120mm	99.06 [3.900]	101.60 [4.000]	80	4-147105-0
		96.52 [3.800]	99.06 [3.900]	78	3-147105-9
		93.98 [3.700]	96.52 [3.800]	76	3-147105-8
		91.44 [3.600]	93.98 [3.700]	74	3-147105-7
		88.90 [3.500]	91.44 [3.600]	72	3-147105-6
		86.36 [3.400]	88.90 [3.500]	70	3-147105-5
		83.82 [3.300]	86.36 [3.400]	68	3-147105-4
		81.28 [3.200]	83.82 [3.300]	66	3-147105-3
		78.74 [3.100]	81.28 [3.200]	64	3-147105-2
		76.20 [3.000]	78.74 [3.100]	62	3-147105-1
		73.66 [2.900]	76.20 [3.000]	60	3-147105-0
		71.12 [2.800]	73.66 [2.900]	58	2-147105-9
	88mm	68.58 [2.700]	71.12 [2.800]	56	2-147105-8
		66.04 [2.600]	68.58 [2.700]	54	2-147105-7
		63.50 [2.500]	66.04 [2.600]	52	2-147105-6
		60.96 [2.400]	63.50 [2.500]	50	2-147105-5
		58.42 [2.300]	60.96 [2.400]	48	2-147105-4
		55.88 [2.200]	58.42 [2.300]	46	2-147105-3
		53.34 [2.100]	55.88 [2.200]	44	2-147105-2
		50.80 [2.000]	53.34 [2.100]	42	2-147105-1
		48.26 [1.900]	50.80 [2.000]	40	2-147105-0
		45.72 [1.800]	48.26 [1.900]	38	1-147105-9
		43.18 [1.700]	45.72 [1.800]	36	1-147105-8
		40.64 [1.600]	43.18 [1.700]	34	1-147105-7
72mm	38.10 [1.500]	40.64 [1.600]	32	1-147105-6	
	35.56 [1.400]	38.10 [1.500]	30	1-147105-5	
	33.02 [1.300]	35.56 [1.400]	28	1-147105-4	
	30.48 [1.200]	33.02 [1.300]	26	1-147105-3	
	27.94 [1.100]	30.48 [1.200]	24	1-147105-2	
	25.40 [1.000]	27.94 [1.100]	22	1-147105-1	
	22.86 [.900]	25.40 [1.000]	20	1-147105-0	
	20.32 [.800]	22.86 [.900]	18	147105-9	
	17.78 [.700]	20.32 [.800]	16	147105-8	
	15.24 [.600]	17.78 [.700]	14	147105-7	
	12.70 [.500]	15.24 [.600]	12	147105-6	
	10.16 [.400]	12.70 [.500]	10	147105-5	
44mm	7.62 [.300]	10.16 [.400]	8	147105-4	
	5.08 [.200]	7.62 [.300]	6	147105-3	
	2.54 [.100]	5.08 [.200]	4	147105-2	
	-	2.54 [.100]	2	147105-1	
24mm	-	2.54 [.100]	2	147105-1	

12  
12  
12  
12  
12  
6 OBSOLETE

THIS DRAWING IS A CONTROLLED DOCUMENT.

DIMENSIONS: mm [INCHES]	TOLERANCES UNLESS OTHERWISE SPECIFIED:	DWN M.BINNER 06NOV02	Tyco Electronics Tyco Electronics Corporation Harrisburg, Pa 17105-3608
0 PLC ± -	1 PLC ± -	CHK J.OLSON 06NOV02	
2 PLC ± .005[0.13]	3 PLC ± -	APVD J.OLSON 06NOV02	NAME RECEPTACLE ASSEMBLY, MOD IV, DOUBLE ROW, DUAL ENTRY, .100X.100CL, SURFACE MOUNT, AMPMODU
4 PLC ± -	ANGLES ± -	PRODUCT SPEC	
MATERIAL 1	FINISH SEE TABLE	APPLICATION SPEC	SIZE CAGE CODE DRAWING NO RESTRICTED TO
		108-25022	A2 00779 C=147105
		WEIGHT 114-25018	SCALE 4:1 SHEET 1 OF 2 REV J3
		CUSTOMER DRAWING	

THIS DRAWING IS UNPUBLISHED. RELEASED FOR PUBLICATION  
 © COPYRIGHT BY TYCO ELECTRONICS CORPORATION. ALL RIGHTS RESERVED.

LOC	DIST	REVISIONS			
P	LTR	DESCRIPTION	DATE	DWN	APVD
AD	00	SEE SHEET 1	-	-	-

- 1 HOUSING: FLAME RETARDANT, GLASS FILLED, POLYESTER, COLOR: BLACK.  
CONTACT: PHOSPHOR BRONZE  
VACUUM COVER: STAINLESS STEEL
- 2 CONTACT: DUPLEX PLATED 0.76µm[.000030] GOLD IN CONTACT AREA, 3.81-7.62µm[.000150-.000300] BRIGHT TIN-LEAD ON, LEADS, ALL OVER 1.27µm[.000050] MINIMUM NICKEL
- 3 THESE DIMENSIONS PERTAIN TO CAVITY CENTERLINES ONLY NOT TO CONTACT LOCATIONS
- 4 TYCO PART NUMBER AND DATE CODE ARE MARKED IN APPROXIMATE LOCATION SHOWN.
- 5 TOLERANCE IS NON-CUMULATIVE.
- 6 2 POSITION DATE CODE IS MARKED OPPOSITE SIDE OF TYCO LOGO.
- 7 POINT OF MEASUREMENT DIMENSION FOR PLATING THICKNESS (INSIDE CONTACT BEAM).
- 8 POINT-OF-CONTACT DIMENSION.
- 9 ø5.51[.217] MIN TARGET AREA FOR VACUUM PICK UP. COVER TO BE REMOVED AFTER SOLDERING.
- 10. PACKAGED IN TAPE & REEL PER EIA 481 SPECIFICATION..
- 11 TYCO TRADEMARK AND CSA LOGO ARE MOLDED INTO HOUSING.
- 12 NO PART NUMBER REQUIRED ON THIS PART.
- 13 CONTACT: DUPLEX PLATED 0.76µm[.000030] GOLD IN CONTACT AREA, 3.81-7.62µm[.000150-.000300] MATTE TIN ON LEADS, ALL OVER 1.27µm[.000050] MINIMUM NICKEL.
- 14 ROHS 2002/95/EC COMPLIANT.

FINISH	EIA TAPE WIDTH	B	A	NO.OF POSN.	PART NUMBER
13	120mm	99.06[3.900]	101.60[4.000]	80	9-147105-0
		96.52[3.800]	99.06[3.900]	78	8-147105-9
		93.98[3.700]	96.52[3.800]	76	8-147105-8
		91.44[3.600]	93.98[3.700]	74	8-147105-7
		88.90[3.500]	91.44[3.600]	72	8-147105-6
		86.36[3.400]	88.90[3.500]	70	8-147105-5
		83.82[3.300]	86.36[3.400]	68	8-147105-4
		81.28[3.200]	83.82[3.300]	66	8-147105-3
		78.74[3.100]	81.28[3.200]	64	8-147105-2
		76.20[3.000]	78.74[3.100]	62	8-147105-1
		73.66[2.900]	76.20[3.000]	60	8-147105-0
		71.12[2.800]	73.66[2.900]	58	7-147105-9
14	88mm	68.58[2.700]	71.12[2.800]	56	7-147105-8
		66.04[2.600]	68.58[2.700]	54	7-147105-7
		63.50[2.500]	66.04[2.600]	52	7-147105-6
		60.96[2.400]	63.50[2.500]	50	7-147105-5
		58.42[2.300]	60.96[2.400]	48	7-147105-4
		55.88[2.200]	58.42[2.300]	46	7-147105-3
12	72mm	53.34[2.100]	55.88[2.200]	44	7-147105-2
		50.80[2.000]	53.34[2.100]	42	7-147105-1
		48.26[1.900]	50.80[2.000]	40	7-147105-0
		45.72[1.800]	48.26[1.900]	38	6-147105-9
		43.18[1.700]	45.72[1.800]	36	6-147105-8
		40.64[1.600]	43.18[1.700]	34	6-147105-7
		38.10[1.500]	40.64[1.600]	32	6-147105-6
		35.56[1.400]	38.10[1.500]	30	6-147105-5
		33.02[1.300]	35.56[1.400]	28	6-147105-4
		30.48[1.200]	33.02[1.300]	26	6-147105-3
		27.94[1.100]	30.48[1.200]	24	6-147105-2
		25.40[1.000]	27.94[1.100]	22	6-147105-1
12	44mm	22.86[.900]	25.40[1.000]	20	6-147105-0
		20.32[.800]	22.86[.900]	18	5-147105-9
		17.78[.700]	20.32[.800]	16	5-147105-8
		15.24[.600]	17.78[.700]	14	5-147105-7
		12.70[.500]	15.24[.600]	12	5-147105-6
		10.16[.400]	12.70[.500]	10	5-147105-5
		7.62[.300]	10.16[.400]	8	5-147105-4
		5.08[.200]	7.62[.300]	6	5-147105-3
12	24mm	2.54[.100]	5.08[.200]	4	5-147105-2
		-	2.54[.100]	2	5-147105-1

THIS DRAWING IS A CONTROLLED DOCUMENT.

DWN M.BINNER 06NOV02	Tyco Electronics Corporation Harrisburg, Pa 17105-3608
CHK J.OLSON 06NOV02	
APVD J.OLSON 06NOV02	
PRODUCT SPEC J.OLSON 06NOV02	
APPLICATION SPEC	NAME RECEPTACLE ASSEMBLY, MOD IV, DOUBLE ROW, DUAL ENTRY, .100X.100CL, SURFACE MOUNT, AMPMODU
108-25022	SIZE CAGE CODE DRAWING NO RESTRICTED TO
WEIGHT 114-25018	A2 00779 C=147105
CUSTOMER DRAWING	SCALE 1:1 SHEET 2 OF 2 REV J3

TOLERANCES UNLESS OTHERWISE SPECIFIED:

0 PLC	± -
1 PLC	± -
2 PLC	± .005[0.13]
3 PLC	± -
4 PLC	± -
ANGLES	± -

MATERIAL 1 SEE TABLE